

401 Sedi viti Counterborers

- HSSE
-
-
- 180°
- ISO 4205
- DIN 373



Uncoated

402 Sedi viti Counterborers

- HSSE
-
-
- 180°
- ISO 4205
- DIN 373



Uncoated

403 Sedi viti Counterborers

- HSSE
-
-
- 90°
- ISO 4206
- DIN 1866



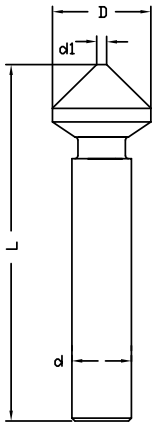
Uncoated

FSB

| dv | d1 | D | L | d | z | 401 | FSB | 402 | FSB | 403 | FSB |
|-----|------|------|-----|----|---|--------|-------|--------|--------|--------|-------|
| | e8 | z9 | | h8 | | | € | | € | | € |
| M3 | 3,2 | 6 | 71 | 6 | 4 | 401003 | 16,60 | | | | |
| M4 | 4,3 | 7.4 | 71 | 8 | 4 | 401004 | 16,60 | | | | |
| M5 | 5,3 | 9.4 | 80 | 10 | 4 | 401005 | 19,10 | | | | |
| M6 | 6,4 | 10.4 | 80 | 10 | 4 | 401006 | 22,80 | | | | |
| M8 | 8,4 | 13.5 | 100 | 12 | 4 | 401008 | 28,10 | | | | |
| M10 | 10,5 | 16.5 | 100 | 12 | 4 | 401010 | 35,10 | | | | |
| M12 | 13 | 20 | 100 | 12 | 4 | 401012 | 41,80 | | | | |
| | | | | | | | | | | | |
| dv | d1 | D | L | Mk | z | | | | | | |
| M10 | 10,5 | 16.5 | 145 | 2 | 4 | | | 402010 | 47,80 | | |
| M12 | 13 | 20 | 150 | 2 | 4 | | | 402012 | 60,00 | | |
| M14 | 15 | 23 | 160 | 2 | 4 | | | 402014 | 70,00 | | |
| M16 | 17 | 25 | 165 | 2 | 4 | | | 402016 | 78,10 | | |
| M18 | 19 | 28 | 175 | 2 | 4 | | | 402018 | 101,70 | | |
| M20 | 21 | 31 | 200 | 3 | 4 | | | 402020 | 136,00 | | |
| | | | | | | | | | | | |
| dv | d1 | D | L | d | z | | | | | | |
| M3 | 3,2 | 6.5 | 71 | 6 | 4 | | | | | 403003 | 18,30 |
| M4 | 4,3 | 8.6 | 71 | 8 | 4 | | | | | 403004 | 18,30 |
| M5 | 5,3 | 10.6 | 80 | 10 | 4 | | | | | 403005 | 25,30 |
| M6 | 6,4 | 12.6 | 80 | 10 | 4 | | | | | 403006 | 27,00 |
| M8 | 8,4 | 16.7 | 100 | 12 | 4 | | | | | 403008 | 39,10 |
| M10 | 10,5 | 20.7 | 100 | 12 | 4 | | | | | 403010 | 41,80 |
| | | | | | | | | | | | |
| | | | | | | | | | | | |
| | | | | | | | | | | | |



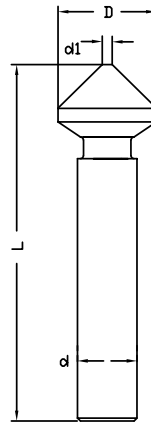
361 Svasatori Countersinking



- HSSE
- Z 3
- 60°
- DIN 333 C



362 Svasatori Countersinking



- HSSE
- Z 3
- 90°
- DIN 333 C



Uncoated Alcrona

Uncoated Alcrona

| | | | | 361 | | | | | | | 362 | | |
|-------|-----|----|----|--------|-------|-------|------|-----|----|-----|--------|-------|-------|
| D | d1 | d | L | PSV | NIG | D | d1 | d | L | PSV | NIG | | |
| ±0,05 | | h8 | | € | € | | | | | € | € | | |
| 6,3 | 1,5 | 5 | 47 | 361063 | 16,10 | 20,30 | 4,3 | 1,3 | 4 | 40 | 362043 | 17,30 | 21,60 |
| 8,3 | 2 | 6 | 52 | 361083 | 17,50 | 23,00 | 5,3 | 1,5 | 4 | 40 | 362053 | 17,30 | 21,60 |
| 10,4 | 2,5 | 6 | 53 | 361104 | 17,30 | 25,10 | 6,3 | 2,0 | 5 | 45 | 362063 | 13,60 | 19,00 |
| 12,4 | 3 | 8 | 60 | 361124 | 21,40 | 28,20 | 7,3 | 2,0 | 6 | 50 | 362073 | 12,90 | 20,20 |
| 16,5 | 4 | 10 | 65 | 361165 | 23,70 | 35,60 | 8,3 | 2,5 | 6 | 50 | 362083 | 12,90 | 20,20 |
| 20,5 | 4 | 10 | 69 | 361205 | 35,00 | 46,10 | 9,4 | 3,0 | 6 | 50 | 362094 | 13,40 | 21,30 |
| 25,0 | 5 | 10 | 75 | 361250 | 47,50 | 68,00 | 10,4 | 3,0 | 6 | 50 | 362104 | 13,60 | 21,40 |
| | | | | | | | 12,4 | 3,0 | 8 | 56 | 362124 | 16,20 | 23,80 |
| | | | | | | | 16,5 | 4,0 | 10 | 60 | 362165 | 25,50 | 31,80 |
| | | | | | | | 20,5 | 4,0 | 10 | 63 | 362205 | 30,40 | 39,10 |
| | | | | | | | 25,0 | 4,0 | 10 | 67 | 362250 | 43,10 | 56,90 |
| | | | | | | | 31,0 | 4,0 | 12 | 71 | 362310 | 67,50 | 96,50 |

PSV

